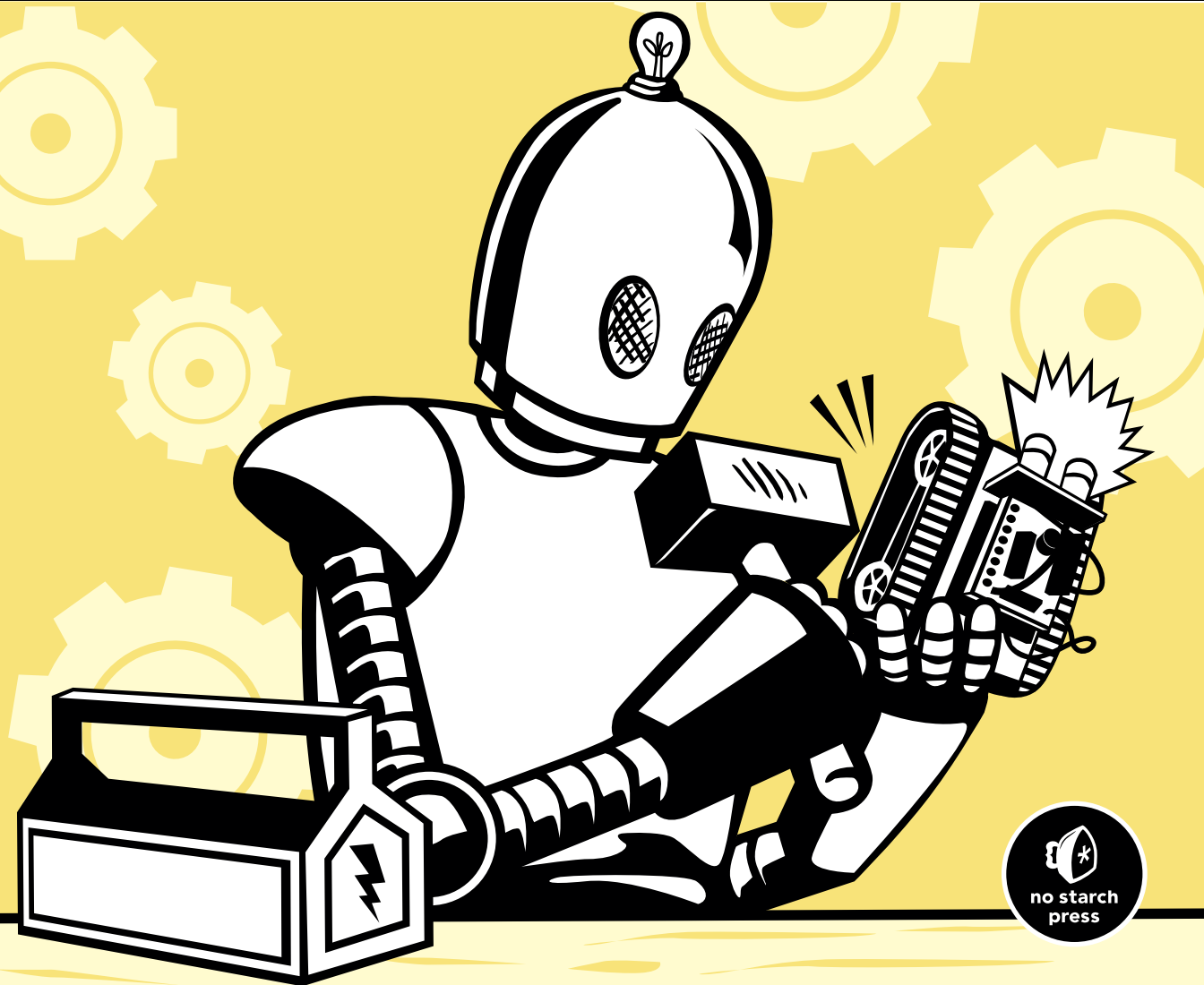


# ARDUINO WORKSHOP

A *HANDS-ON* INTRODUCTION  
WITH 65 PROJECTS

JOHN BOXALL



# CONTENTS IN DETAIL

## ACKNOWLEDGMENTS

xix

<b>1</b>	
<b>GETTING STARTED</b>	<b>1</b>
The Possibilities Are Endless . . . . .	2
Strength in Numbers . . . . .	6
Parts and Accessories . . . . .	6
Required Software . . . . .	7
Mac OS X . . . . .	7
Windows XP and Later . . . . .	11
Ubuntu Linux 9.04 and Later . . . . .	15
Safety . . . . .	18
Looking Ahead . . . . .	18
<b>2</b>	
<b>EXPLORING THE ARDUINO BOARD AND THE IDE</b>	<b>19</b>
The Arduino Board . . . . .	19
Taking a Look Around the IDE . . . . .	25
The Command Area . . . . .	25
The Text Area . . . . .	26
The Message Window Area . . . . .	26
Creating Your First Sketch in the IDE . . . . .	27
Comments . . . . .	27
The Setup Function . . . . .	28
Controlling the Hardware . . . . .	28
The Loop Function . . . . .	28
Verifying Your Sketch . . . . .	30
Uploading and Running Your Sketch . . . . .	31
Modifying Your Sketch . . . . .	31
Looking Ahead . . . . .	31
<b>3</b>	
<b>FIRST STEPS</b>	<b>33</b>
Planning Your Projects . . . . .	34
About Electricity . . . . .	34
Current . . . . .	34
Voltage . . . . .	35
Power . . . . .	35
Electronic Components . . . . .	35
The Resistor . . . . .	35
The Light-Emitting Diode . . . . .	39
The Solderless Breadboard . . . . .	41
<b>Project #1: Creating a Blinking LED Wave</b> . . . . .	<b>43</b>
The Algorithm . . . . .	43
The Hardware . . . . .	43

The Sketch . . . . .	43
The Schematic . . . . .	44
Running the Sketch . . . . .	45
Using Variables . . . . .	45
<b>Project #2: Repeating with for Loops . . . . .</b>	<b>46</b>
Varying LED Brightness with Pulse-Width Modulation . . . . .	47
<b>Project #3: Demonstrating PWM . . . . .</b>	<b>49</b>
More Electric Components . . . . .	49
The Transistor . . . . .	50
The Rectifier Diode . . . . .	50
The Relay . . . . .	51
Higher-Voltage Circuits . . . . .	52
Looking Ahead . . . . .	53

## **4 BUILDING BLOCKS 55**

Using Schematic Diagrams . . . . .	56
Identifying Components . . . . .	56
Wires in Schematics . . . . .	58
Dissecting a Schematic . . . . .	59
The Capacitor . . . . .	60
Measuring the Capacity of a Capacitor . . . . .	60
Reading Capacitor Values . . . . .	61
Types of Capacitors . . . . .	61
Digital Inputs . . . . .	63
<b>Project #4: Demonstrating a Digital Input . . . . .</b>	<b>65</b>
The Algorithm . . . . .	65
The Hardware . . . . .	65
The Schematic . . . . .	65
The Sketch . . . . .	69
Modifying Your Sketch . . . . .	70
Understanding the Sketch . . . . .	70
Creating Constants with #define . . . . .	70
Reading Digital Input Pins . . . . .	70
Making Decisions with if . . . . .	71
Making More Decisions with if-then-else . . . . .	71
Boolean Variables . . . . .	72
Comparison Operators . . . . .	72
Making Two or More Comparisons . . . . .	73
<b>Project #5: Controlling Traffic . . . . .</b>	<b>74</b>
The Goal . . . . .	74
The Algorithm . . . . .	74
The Hardware . . . . .	75
The Schematic . . . . .	75
The Sketch . . . . .	76
Running the Sketch . . . . .	79
Analog vs. Digital Signals . . . . .	79
<b>Project #6: Creating a Single-Cell Battery Tester . . . . .</b>	<b>80</b>
The Goal . . . . .	81
The Algorithm . . . . .	81
The Hardware . . . . .	81

The Schematic . . . . .	81
The Sketch . . . . .	82
Doing Arithmetic with an Arduino . . . . .	83
Float Variables . . . . .	84
Comparison Operators for Calculations . . . . .	84
Improving Analog Measurement Precision with a Reference Voltage . . . . .	84
Using an External Reference Voltage . . . . .	85
Using the Internal Reference Voltage . . . . .	86
The Variable Resistor . . . . .	86
Piezoelectric Buzzers . . . . .	87
Piezo Schematic . . . . .	88
<b>Project #7: Trying Out a Piezo Buzzer . . . . .</b>	<b>88</b>
<b>Project #8: Creating a Quick-Read Thermometer . . . . .</b>	<b>90</b>
The Goal . . . . .	90
The Hardware . . . . .	90
The Schematic . . . . .	91
The Sketch . . . . .	91
Hacking the Sketch . . . . .	93
Looking Ahead . . . . .	93

## 5

### **WORKING WITH FUNCTIONS 95**

<b>Project #9: Creating a Function to Repeat an Action . . . . .</b>	<b>96</b>
<b>Project #10: Creating a Function to Set the Number of Blinks . . . . .</b>	<b>97</b>
Creating a Function to Return a Value . . . . .	98
<b>Project #11: Creating a Quick-Read Thermometer That Blinks the Temperature . . . . .</b>	<b>98</b>
The Hardware . . . . .	99
The Schematic . . . . .	99
The Sketch . . . . .	100
Displaying Data from the Arduino in the Serial Monitor . . . . .	101
The Serial Monitor . . . . .	102
<b>Project #12: Displaying the Temperature in the Serial Monitor . . . . .</b>	<b>103</b>
Debugging with the Serial Monitor . . . . .	105
Making Decisions with while Statements . . . . .	105
do-while . . . . .	105
Sending Data from the Serial Monitor to the Arduino . . . . .	106
<b>Project #13: Multiplying a Number by Two . . . . .</b>	<b>106</b>
long Variables . . . . .	107
<b>Project #14: Using long Variables . . . . .</b>	<b>107</b>
Looking Ahead . . . . .	109

## 6

### **NUMBERS, VARIABLES, AND ARITHMETIC 111**

Generating Random Numbers . . . . .	112
Using Ambient Current to Generate a Random Number . . . . .	112
<b>Project #15: Creating an Electronic Die . . . . .</b>	<b>113</b>
The Hardware . . . . .	114
The Schematic . . . . .	114
The Sketch . . . . .	115
Modifying the Sketch . . . . .	116

A Quick Course in Binary . . . . .	116
Byte Variables . . . . .	117
Increasing Digital Outputs with Shift Registers . . . . .	118
<b>Project #16: Creating an LED Binary Number Display . . . . .</b>	<b>119</b>
The Hardware . . . . .	119
Connecting the 74HC595 . . . . .	119
The Sketch . . . . .	121
<b>Project #17: Making a Binary Quiz Game . . . . .</b>	<b>122</b>
The Algorithm . . . . .	122
The Sketch . . . . .	122
Arrays . . . . .	124
Defining an Array . . . . .	124
Referring to Values in an Array . . . . .	125
Writing to and Reading from Arrays . . . . .	125
Seven-Segment LED Displays . . . . .	126
Controlling the LED . . . . .	127
<b>Project #18: Creating a Single-Digit Display . . . . .</b>	<b>129</b>
The Hardware . . . . .	129
The Schematic . . . . .	129
The Sketch . . . . .	130
Displaying Double Digits . . . . .	131
<b>Project #19: Controlling Two Seven-Segment LED Display Modules . . . . .</b>	<b>131</b>
The Hardware . . . . .	131
The Schematic . . . . .	132
Modulo . . . . .	133
<b>Project #20: Creating a Digital Thermometer . . . . .</b>	<b>134</b>
The Hardware . . . . .	134
The Sketch . . . . .	134
LED Matrix Display Modules . . . . .	135
The LED Matrix Schematic . . . . .	136
Making the Connections . . . . .	137
Bitwise Arithmetic . . . . .	139
The Bitwise AND Operator . . . . .	139
The Bitwise OR Operator . . . . .	139
The Bitwise XOR Operator . . . . .	140
The Bitwise NOT Operator . . . . .	140
Bitshift Left and Right . . . . .	140
<b>Project #21: Creating an LED Matrix . . . . .</b>	<b>141</b>
<b>Project #22: Creating Images on an LED Matrix . . . . .</b>	<b>142</b>
<b>Project #23: Displaying an Image on an LED Matrix . . . . .</b>	<b>144</b>
<b>Project #24: Animating an LED Matrix . . . . .</b>	<b>145</b>
The Sketch . . . . .	145
Looking Ahead . . . . .	146

## **7 LIQUID CRYSTAL DISPLAYS 147**

Character LCD Modules . . . . .	148
Using a Character LCD in a Sketch . . . . .	149
Displaying Text . . . . .	150
Displaying Variables or Numbers . . . . .	151

<b>Project #25: Defining Custom Characters</b> . . . . .	<b>152</b>
Graphic LCD Modules . . . . .	153
Connecting the Graphic LCD . . . . .	154
Using the LCD . . . . .	155
Controlling the Display . . . . .	155
<b>Project #26: Seeing the Text Functions in Action</b> . . . . .	<b>155</b>
Creating More Complex Display Effects . . . . .	156
<b>Project #27: Creating a Temperature History Monitor</b> . . . . .	<b>157</b>
The Algorithm . . . . .	158
The Hardware . . . . .	158
The Sketch . . . . .	158
The Result . . . . .	160
Modifying the Sketch . . . . .	160
Looking Ahead . . . . .	160

## **8 EXPANDING YOUR ARDUINO** **161**

Shields . . . . .	162
ProtoShields . . . . .	164
<b>Project #28: Creating a Custom Shield with Eight LEDs</b> . . . . .	<b>165</b>
The Hardware . . . . .	165
The Schematic . . . . .	165
The Layout of the ProtoShield Board . . . . .	166
The Design . . . . .	166
Soldering the Components . . . . .	167
Modifying the Custom Shield . . . . .	169
Expanding Sketches with Libraries . . . . .	169
Importing a Shield's Libraries . . . . .	169
MicroSD Memory Cards . . . . .	173
Testing Your MicroSD Card . . . . .	174
<b>Project #29: Writing Data to the Memory Card</b> . . . . .	<b>175</b>
<b>Project #30: Creating a Temperature-Logging Device</b> . . . . .	<b>177</b>
The Hardware . . . . .	177
The Sketch . . . . .	177
Timing Applications with millis() and micros(). . . . .	179
<b>Project #31: Creating a Stopwatch</b> . . . . .	<b>181</b>
The Hardware . . . . .	181
The Schematic . . . . .	181
The Sketch . . . . .	182
Interrupts . . . . .	184
Interrupt Modes . . . . .	184
Configuring Interrupts . . . . .	185
Activating or Deactivating Interrupts . . . . .	185
<b>Project #32: Using Interrupts</b> . . . . .	<b>185</b>
The Sketch . . . . .	185
Looking Ahead . . . . .	186

## 9

### **NUMERIC KEYPADS** **187**

Using a Numeric Keypad . . . . .	187
Wiring a Keypad . . . . .	188
Programming for the Keypad . . . . .	189
Testing the Sketch . . . . .	189
Making Decisions with switch-case . . . . .	190
<b>Project #33: Creating a Keypad-Controlled Lock . . . . .</b>	<b>190</b>
The Sketch . . . . .	191
How It Works . . . . .	192
Testing the Sketch . . . . .	193
Looking Ahead . . . . .	193

## 10

### **ACCEPTING USER INPUT WITH TOUCHSCREENS** **195**

Touchscreens . . . . .	195
Connecting the Touchscreen . . . . .	196
<b>Project #34: Addressing Areas on the Touchscreen. . . . .</b>	<b>197</b>
The Hardware . . . . .	197
The Sketch . . . . .	197
Testing the Sketch . . . . .	198
Mapping the Touchscreen . . . . .	199
<b>Project #35: Creating a Two-Zone On/Off Touch Switch. . . . .</b>	<b>200</b>
The Sketch . . . . .	200
How It Works . . . . .	202
Testing the Sketch . . . . .	202
<b>Project #36: Creating a Three-Zone Touch Switch. . . . .</b>	<b>202</b>
The Touchscreen Map . . . . .	203
The Sketch . . . . .	203
How It Works . . . . .	205
Looking Ahead . . . . .	205

## 11

### **MEET THE ARDUINO FAMILY** **207**

<b>Project #37: Creating Your Own Breadboard Arduino . . . . .</b>	<b>208</b>
The Hardware . . . . .	208
The Schematic . . . . .	211
Running a Test Sketch . . . . .	214
The Many Arduino Boards . . . . .	217
Arduino Uno . . . . .	219
Freetronics Eleven . . . . .	219
The Freeduino . . . . .	220
The Boarduino . . . . .	220
The Arduino Nano . . . . .	221
The Arduino LilyPad . . . . .	221
The Arduino Mega 2560 . . . . .	222
The Freetronics EtherMega . . . . .	222
The Arduino Due . . . . .	223
Looking Ahead . . . . .	224

<b>12</b>		
<b>MOTORS AND MOVEMENT</b>		<b>225</b>
Making Small Motions with Servos . . . . .		225
Selecting a Servo . . . . .		226
Connecting a Servo . . . . .		227
Putting a Servo to Work . . . . .		227
<b>Project #38: Building an Analog Thermometer . . . . .</b>		<b>228</b>
The Hardware . . . . .		228
The Schematic . . . . .		229
The Sketch . . . . .		229
Using Electric Motors . . . . .		231
The TIP120 Darlington Transistor . . . . .		231
<b>Project #39: Controlling the Motor . . . . .</b>		<b>232</b>
The Hardware . . . . .		232
The Schematic . . . . .		233
The Sketch . . . . .		234
<b>Project #40: Building and Controlling a Tank Robot . . . . .</b>		<b>235</b>
The Hardware . . . . .		235
The Schematic . . . . .		238
The Sketch . . . . .		240
Sensing Collisions . . . . .		243
<b>Project #41: Detecting Tank Bot Collisions with a Microswitch . . . . .</b>		<b>243</b>
The Schematic . . . . .		243
The Sketch . . . . .		244
Infrared Distance Sensors . . . . .		246
Wiring It Up . . . . .		247
Testing the IR Distance Sensor . . . . .		247
<b>Project #42: Detecting Tank Bot Collisions with IR Distance Sensor . . . . .</b>		<b>249</b>
Ultrasonic Distance Sensors . . . . .		251
Connecting the Ultrasonic Sensor . . . . .		252
Using the Ultrasonic Sensor . . . . .		252
Testing the Ultrasonic Distance Sensor . . . . .		252
<b>Project #43: Detecting Tank Bot Collisions with an Ultrasonic Distance Sensor . . . . .</b>		<b>254</b>
The Sketch . . . . .		254
Looking Ahead . . . . .		256

<b>13</b>		
<b>USING GPS WITH YOUR ARDUINO</b>		<b>257</b>
What Is GPS? . . . . .		258
Testing the GPS Shield . . . . .		259
<b>Project #44: Creating a Simple GPS Receiver . . . . .</b>		<b>261</b>
The Hardware . . . . .		261
The Sketch . . . . .		261
Displaying the Position on the LCD . . . . .		262
<b>Project #45: Creating an Accurate GPS-based Clock . . . . .</b>		<b>263</b>
The Hardware . . . . .		263
The Sketch . . . . .		264



<b>Project #46: Recording the Position of a Moving Object over Time</b> .....	<b>265</b>
The Hardware .....	265
The Sketch .....	266
Displaying Locations on a Map .....	268
Looking Ahead .....	269

## 14

### **WIRELESS DATA** **271**

Using Low-cost Wireless Modules .....	271
<b>Project #47: Creating a Wireless Remote Control</b> .....	<b>272</b>
The Hardware for the Transmitter Circuit .....	273
The Transmitter Schematic .....	273
The Hardware for the Receiver Circuit .....	274
The Receiver Schematic .....	274
The Transmitter Sketch .....	275
The Receiver Sketch .....	276
Using XBee Wireless Data Modules for Greater Range and Faster Speed .....	277
<b>Project #48: Transmitting Data with an XBee</b> .....	<b>279</b>
The Sketch .....	279
Setting Up the Computer to Receive Data .....	279
<b>Project #49: Building a Remote Control Thermometer</b> .....	<b>281</b>
The Hardware .....	281
The Layout .....	281
The Sketch .....	282
Operation .....	283
Looking Ahead .....	284

## 15

### **INFRARED REMOTE CONTROL** **285**

What Is Infrared? .....	285
Setting Up for Infrared .....	286
The IR Receiver .....	286
The Remote Control .....	287
A Test Sketch .....	287
Testing the Setup .....	288
<b>Project #50: Creating an IR Remote Control Arduino</b> .....	<b>289</b>
The Hardware .....	289
The Sketch .....	289
Expanding the Sketch .....	290
<b>Project #51: Creating an IR Remote Control Tank</b> .....	<b>291</b>
The Hardware .....	291
The Sketch .....	291
Looking Ahead .....	293

## 16

### **READING RFID TAGS** **295**

Inside RFID Devices .....	296
Testing the Hardware .....	297
The Schematic .....	297
Testing the Schematic .....	297

<b>Project #52: Creating a Simple RFID Control System . . . . .</b>	<b>299</b>
The Sketch . . . . .	299
How It Works . . . . .	300
Storing Data in the Arduino's Built-in EEPROM . . . . .	301
Reading and Writing to the EEPROM . . . . .	302
<b>Project #53: Creating an RFID Control with "Last Action" Memory . . . . .</b>	<b>303</b>
The Sketch . . . . .	303
How It Works . . . . .	306
Looking Ahead . . . . .	306

## 17

<b>DATA BUSES</b>	<b>307</b>
The I <sup>2</sup> C Bus . . . . .	308
<b>Project #54: Using an External EEPROM . . . . .</b>	<b>309</b>
The Hardware . . . . .	309
The Schematic . . . . .	310
The Sketch . . . . .	311
The Result . . . . .	312
<b>Project #55: Using a Port Expander IC . . . . .</b>	<b>313</b>
The Hardware . . . . .	313
The Schematic . . . . .	313
The Sketch . . . . .	314
The SPI Bus . . . . .	315
Pin Connections . . . . .	316
Implementing the SPI . . . . .	316
Sending Data to an SPI Device . . . . .	317
<b>Project #56: Using a Digital Rheostat . . . . .</b>	<b>318</b>
The Hardware . . . . .	318
The Schematic . . . . .	318
The Sketch . . . . .	319
Looking Ahead . . . . .	320

## 18

<b>REAL-TIME CLOCKS</b>	<b>321</b>
Connecting the RTC Module . . . . .	322
<b>Project #57: Adding and Displaying Time and Date with an RTC . . . . .</b>	<b>322</b>
The Hardware . . . . .	322
The Sketch . . . . .	323
How It Works . . . . .	325
<b>Project #58: Creating a Simple Digital Clock . . . . .</b>	<b>326</b>
The Hardware . . . . .	326
The Sketch . . . . .	327
How It Works and Results . . . . .	330
<b>Project #59: Creating an RFID Time-Clock System . . . . .</b>	<b>330</b>
The Hardware . . . . .	331
The Sketch . . . . .	331
How It Works . . . . .	335
Looking Ahead . . . . .	336

<b>19</b>	
<b>THE INTERNET</b>	<b>337</b>
What You'll Need . . . . .	337
<b>Project #60: Building a Remote-Monitoring Station. . . . .</b>	<b>339</b>
The Hardware . . . . .	339
The Sketch . . . . .	339
Troubleshooting . . . . .	341
How It Works . . . . .	342
<b>Project #61: Creating an Arduino Tweeter . . . . .</b>	<b>343</b>
The Hardware . . . . .	343
The Sketch . . . . .	343
Controlling Your Arduino from the Web . . . . .	344
<b>Project #62: Setting Up a Remote Control for Your Arduino . . . . .</b>	<b>345</b>
The Hardware . . . . .	345
The Sketch . . . . .	346
Controlling Your Arduino Remotely . . . . .	347
Looking Ahead . . . . .	348
<b>20</b>	
<b>CELLULAR COMMUNICATIONS</b>	<b>349</b>
The Hardware . . . . .	350
Preparing the Power Shield . . . . .	351
Hardware Configuration and Testing . . . . .	352
Changing the Operating Frequency . . . . .	354
<b>Project #63: Building an Arduino Dialer. . . . .</b>	<b>356</b>
The Hardware . . . . .	356
The Schematic . . . . .	356
The Sketch . . . . .	357
How It Works . . . . .	358
<b>Project #64: Building an Arduino Texter . . . . .</b>	<b>358</b>
The Sketch . . . . .	359
How It Works . . . . .	359
<b>Project #65: Setting Up an SMS Remote Control . . . . .</b>	<b>360</b>
The Hardware . . . . .	360
The Schematic . . . . .	361
The Sketch . . . . .	361
How It Works . . . . .	363
Looking Ahead . . . . .	364
<b>INDEX</b>	<b>365</b>